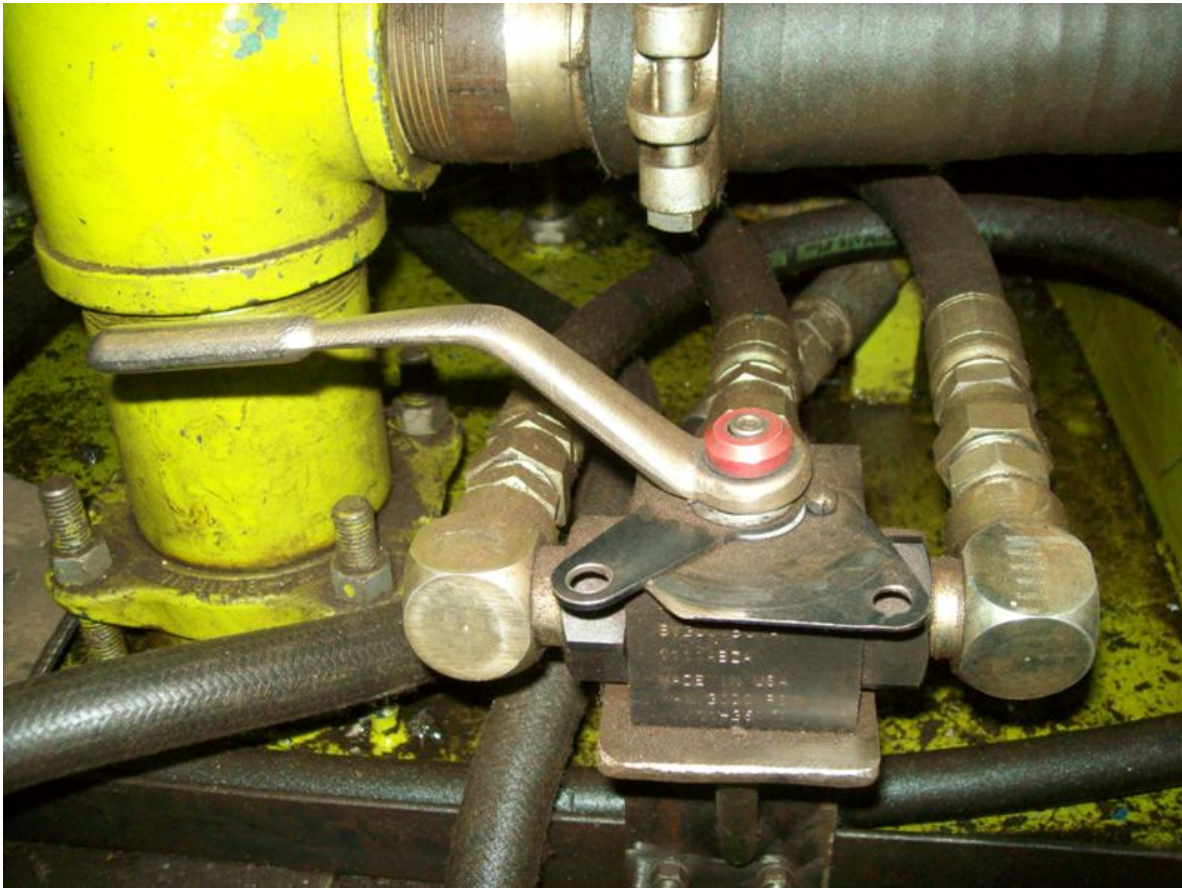


Hydraulic Lockout

Do you have a way to lockout or isolate the pressure in your hydraulic systems during maintenance? If not, consider installing ball valves or other safety devices to make sure that hydraulic pressure is cut off. Notice in the example below the holes for applying lockout padlocks.



Produced by the Institute of Scrap Recycling Industries

www.isri.org

www.isrisafety.org

Comments/questions?

joebateman@isri.org

September 13, 2011